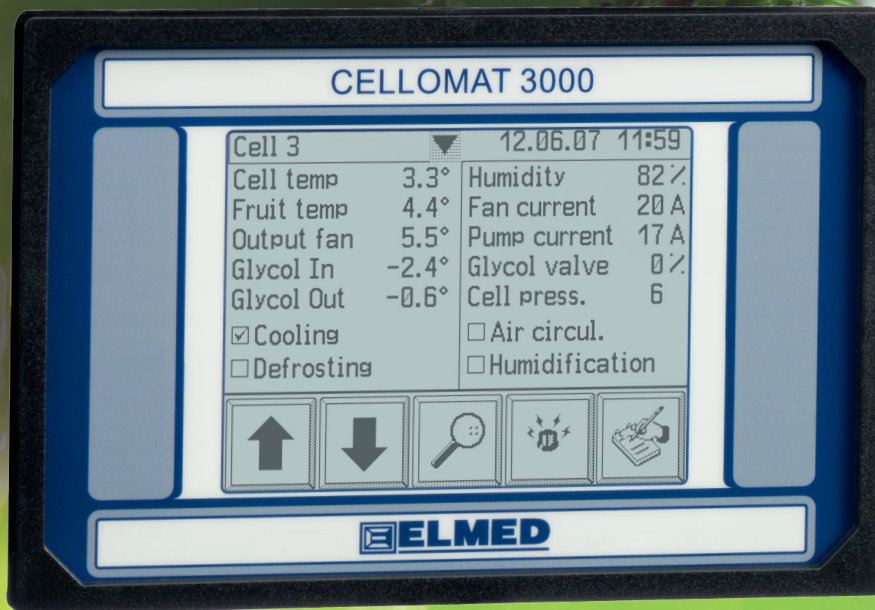


The cooling manager

CELLOMAT 3000

Automatic control for cold chambers



ELMED

Industry-electronics

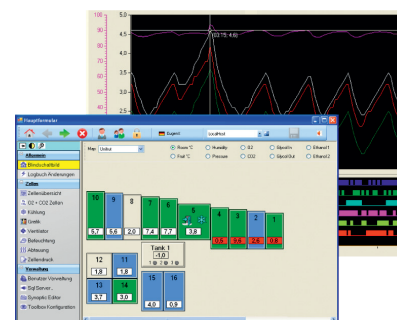
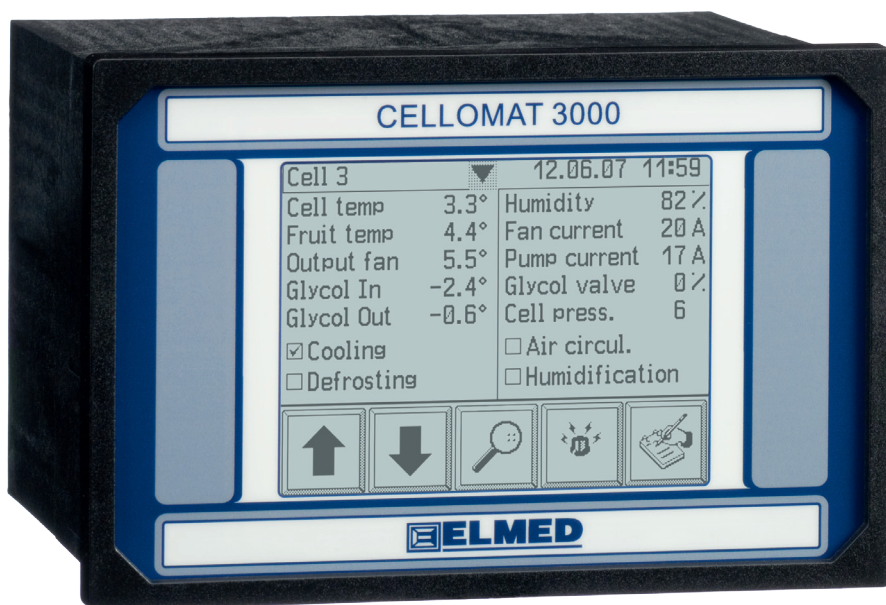
Description

The compact control unit **Cellomat** is able to control a whole cold chamber with all its components.

The **Cellomat** has a graphical touch screen which shows the measurement data and the user interface.

The **Cellomat** unit can function independently as a stand alone control or in combination with other Cellomat units as a control system.

A **Cellomat** device can be integrated easily in an existing **ELMED** US2000 control system. It's fully configurable and controllable by the US2000 PC software.



Characteristics

- Exact and accurate measurement
 - Temperatures: cell, fruit, ventilator, glycol input and output
 - Humidity
 - Cell pressure
 - Pneumatic converter 4 ... 20 mA
 - Current and tension of the ventilators and pumps
- Long term stable and maintenance free because of the proven hybrid technology
- Digital and analogue inputs and outputs
- Capture of external alarm signals
- Communication interfaces Rs232, Rs485, USB, Ethernet
- Graphical touch screen on every device
- Multilingual user menu
- Economic, robust and reliable

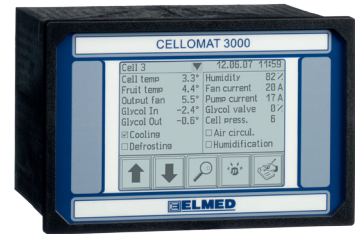




Cellomat system with central PC

recommended for big refrigerated warehouses

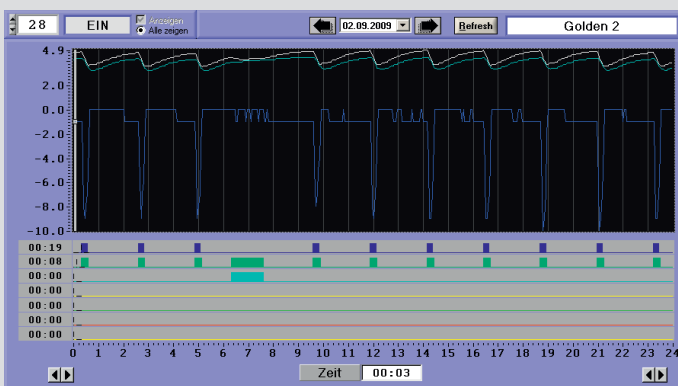
- 🍏 Controllable by the central PC and through the touch screen
- 🍏 Fully functional and configurable also without the PC
- 🍏 Consistent data storage also during PC failure



Cellomat Stand-Alone

recommended for single cold chambers or small warehouses

The Cellomat unit is able to save all the measured data and its own configuration to a SD memory card. The data can be transferred to a PC and visualized in form of graphical diagrams by the optional PC software. It's also possible to modify the control parameters and the configuration of the Cellomat.



- 🍏 Complete control of a cold chamber
- 🍏 Convenient and reliable
- 🍏 No PC necessary
- 🍏 Simple wiring
- 🍏 Data storage on a SD memory card
- 🍏 View graphical diagrams with the optional PC software



Automatic temperature control



Automatic, manual or time triggered ventilation



Automatic, manual or time triggered defrosting



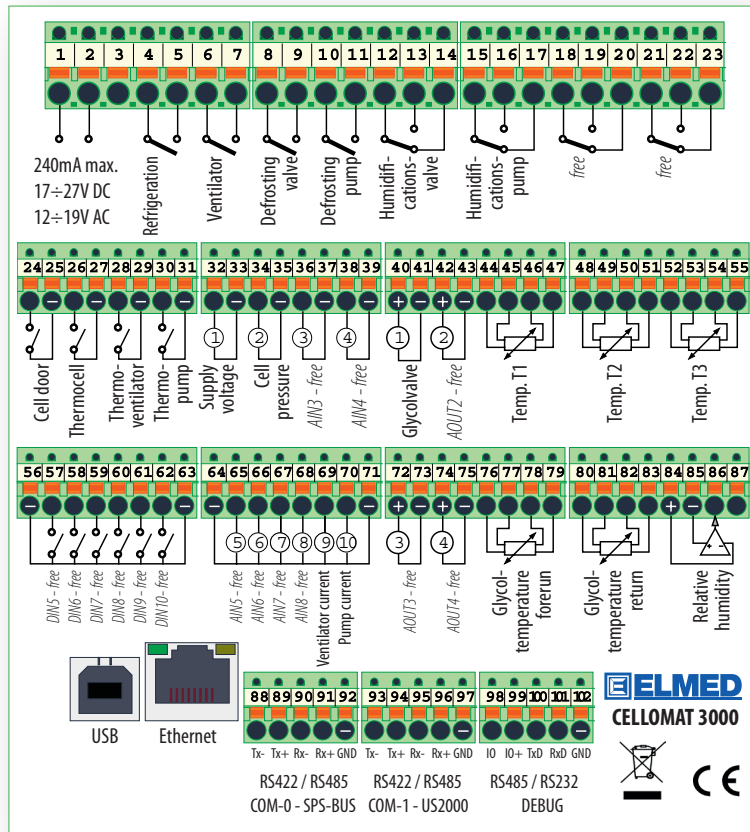
Automatic or manual humidification



Industry-electronics



Wiring diagram



- Analogue inputs: 16 (6 are hybrid inputs for Pt100 temperature sensors)
- Analogue outputs: 4 (2 can be configured as current outputs 4 - 20 mA)
- Digital inputs: 10
- Digital outputs: 8 (4 with a two-way contact)
(4 with a normally open contact)
- Interfaces: 5 Ethernet, USB, 2x Rs422/Rs485, 1x Rs485/Rs232

ELMED

Industry-electronics

Mitterweg 25, I-39100 Bozen

Tel. 0471 977236 / 973276

Fax 0471 976525

www.elmed.it • E-mail: info@elmed.it

OQS

EN-ISO 9001:2000
Reg. Nr.: 3393/0

IO Net