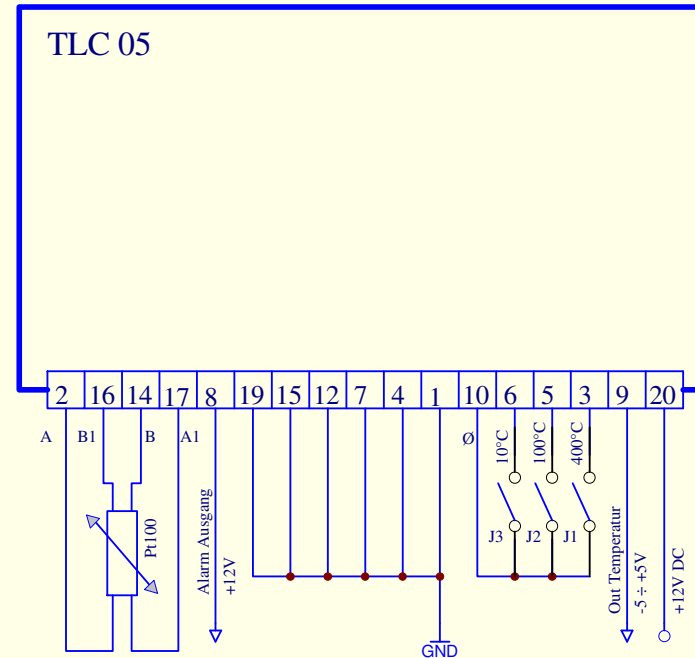
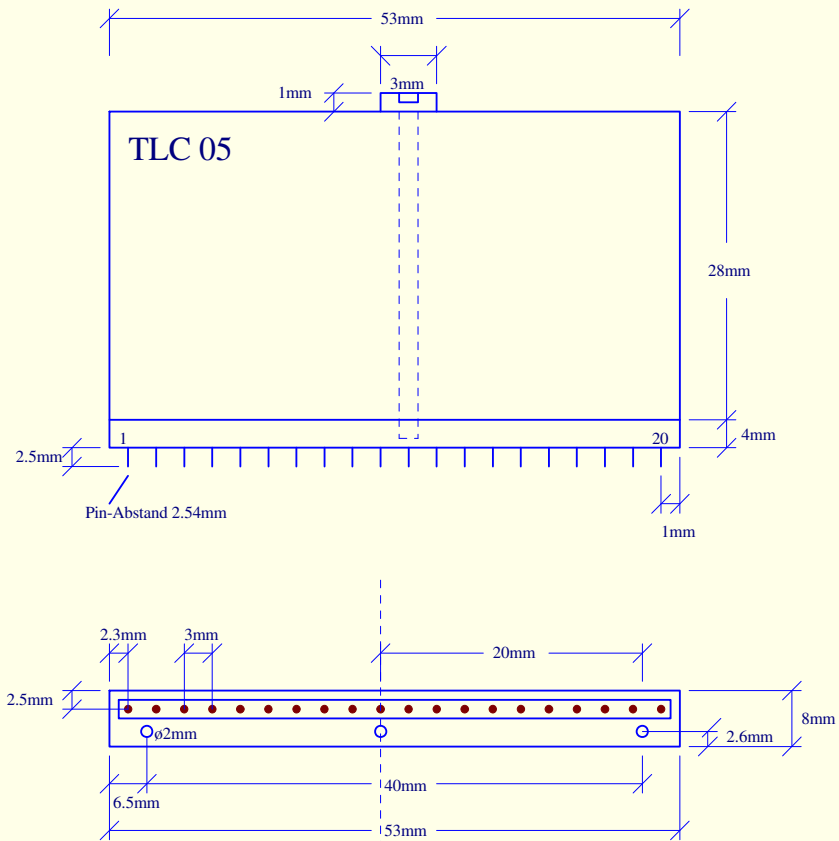


TLC 05 Hybrid für PT100 Temperaturen



Signale	Pin
GND	1
Sonde A	2
J1	3
GND	4
J2	5
J3	6
GND	7
Alarm	8
Out -5÷5V	9
Ø	10
Out -12V	11
GND	12
(Sonde B1)	13
Sonde B1	14
GND	15
Sonde B	16
Sonde A1	17
NC	18
GND	19
+12V DC	20

TLC 05 (Hybrid für PT100 Temperaturen)			
		EN ISO 9001:2000 Reg. Nr.: 3393/0	Revision: _____
Drawn by: H. Ausserer	DocNr. _____	Date: 2-Oct-2006	Sheet Nr.: 0 / 0
File: C:\Projekt\Client\TechnischeDaten.ddb - Documents\TLC05.SCH		Industrietechnik Electronica Industriale ELMED d. ADOLF RAUCH 39100 Bozen - Bolzano Mitterweg - Via di Mezzo ai Piani 25 Tel.: 0471/977236 - Fax: 976525	